

The West Ender

By and for
the West End Neighborhood

October 2004



Historic Tax Credit Workshop

Tuesday, October 5th from 7:00 to 9:00 pm

At St. Paul's in Calhoun Room A

Learn how to take advantage of the tax benefits available for restoration of your historic home or business!

2004 Historic West End Holiday Homes Tour

Saturday, December 4, 2004

10:00 am – 5:00 pm



All historic home, decorating, and art enthusiasts...it is almost time for the 14th biennial West End Holiday Homes Tour! The West End Holiday Homes Tour, a favorite event for home and decorating fans from far and wide, will be Saturday, December 4th from 10:00 am until 5:00 pm. Because the tour is on Saturday instead of Sunday, this year guests will have plenty of time to visit each unique home on the tour, as well as spend time exploring the shops, restaurants and gathering places that make our neighborhood so special!

This year's tour will include several homes built between 1893 and 1917, as well as a newly renovated addition to St. Paul's Episcopal Church. These beautiful and diverse homes all display their own unique qualities varying from decorating styles, to basic architectural differences, and the work and exhibits at St Paul's are truly amazing. You can even get a jump on some holiday shopping because several West End artists will display their works at St Paul's. This is a tour not to be missed so mark your calendars and let your friends and family know that Saturday December 4th is the day!

Beginning in November, advanced tickets will be sold throughout the West End for \$10.00 (or \$12.00 day of the tour). Please check out the November newsletter for locations.

The tour will begin at The Cicero Tise House, located at 952 West Fourth Street, across from Grace Court Park. Here you will find information about the West End and the homes on tour, as well as complementary refreshments and live holiday music.

impeccable
ART

Fine Custom Framing and Gifts

50-C Miller St Winston-Salem, NC 27104
Phone 336-722-1442 336-722-1449 Fax

Brock Snyder Custom Landscapes

**West End
Landscape Renovations**

 design plants trees sod
rock borders retaining walls

Insured **761-8442** Free Estimates

The Cicero Tise House

*952 West Fourth Street
Winston-Salem, NC 27101*

Wedding Receptions • Luncheons
Rehearsal Dinners • Special Occasions
Corporate Meetings

Judy Pavelka 336.462.0850

Highland Presbyterian Church

Invites you to join us worshipping God
and serving our community.

Sunday Morning Worship Service:
8:30 & 11:00 am

Church School for Adults and Children
9:30 am

336.724.6303
2380 Cloverdale Av www.highlandpres.org



Fire • Life • Auto • Commercial • Accident & Health

John Dillon
INSURANCE AGENCY

1016 Brookstown Av. Winston-Salem, NC 27101

Joe Dillon 336-725-3541
Tim Dillon

LSB *The Bank Built Around You*
Wanda S. Merschel

Stratford Road Office 336-631-3900
P.O. Box 5068 Fax: 336-631-3940
Winston-Salem, NC 27113-5068

Traditional and Contemporary Picture Framing
"The Original"

VILLAGE FRAME SHOP
Established in 1975

409 West End Blvd Ed and Sally Richter
Winston-Salem, NC 27101 724-6565

TWIN CITY DINER




(336) 724-4203
1425-A West First St
Winston-Salem, NC 27101

 **Nature's Select**
Premium Turf Services, Inc.

• Biological Lawn care • Tree and Shrub
• Aeration & Seeding • Large Tree Care



336.768.7999 2550 Landmark Drive
FAX 336.768.5280 Winston-Salem, NC
www.naturesselect.com 27103

**KILPATRICK
STOCKTON LLP**

Attorneys at Law
1001 West Fourth Street
Winston-Salem NC 27101-2400
Phone: 336.607.7300 Fax: 336.607.7500
CWiesener@KilpatrickStockton.com

WEST END TAB ROOM

**3rd Annual Carolina Music Ways Festival Brings the
Golden Age of Radio to Old Salem**
Sunday, October 10, 2004; 2:00 – 5:00 pm

Carolina Music Ways Music Heritage Resource Group and Old Salem will present **Carolina Music Ways Festival 2004** on the Tavern Meadow of Old Salem in Winston-Salem on Sunday, October 10th, 2:00 - 5:00 p.m. This free, multicultural event will be presented in the form of an old-fashioned radio show. The festival will recreate the Golden Age of Radio as nationally acclaimed performers from Winston-Salem and the Northwest Piedmont showcase the big band jazz, old-time stringband, gospel, bluegrass, rhythm & blues, and doo-wop played on the radio in our region during the 1930s, '40s, and '50s.

A family-friendly event for all ages, Carolina Music Ways Festival 2004 will also feature dancing, refreshments, and children's activities including kids songs, stories, and crafts.

In case of rain the festival will be held in the auditorium of the Old Salem Visitor Center at the corner of Old Salem Road and Walnut Street.

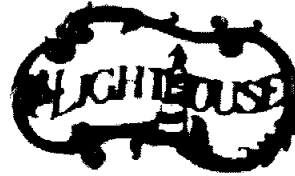
The entertainment line-up includes: The North Carolina School of the Arts Jazz Ensemble with Janice Price and the Piedmont Swing Dance Society; Benton Flippen and the Smokey Valley Boys; Keith Byrd and Friends; Camp Meeting Choir; Benson and Company; NoneSuch Playmakers; and David Stoeri (in children's area)

Festival **parking** will be in the Visitor Center parking lot, which can be accessed form Old Salem Road and Marshall Street. Those unable to walk the short distance from the parking lot may be dropped off at the event site on the Tavern Meadow.

For more information go to www.carolinamusicways.org
<http://www.carolinamusicways.org/> or call (336) 724-2008



480 West End Blvd, Winston-Salem
722-9030 www.erloriginals.com
M-F 8:30-5:30, Sat 10-5



Since 1954 724-9619
A neighborhood restaurant at 905 Burke Street



825 Burke St.
Winston-Salem
Wen-Sat 12-6
& by Appt..
336.971.6373

Elvis on Other Planets. A Weight Chart
Elvis on Mercury...97 lbs. on Venus...232 lbs.
Elvis on Earth... 255 lbs. on Mars ... 97 lbs.
Elvis on Jupiter...648 lbs. on Saturn...275 lbs.
Elvis on Neptune...303 lbs. on Pluto... 13 lbs.



Sam Ogburn, Jr.
1056 Burke Street 748-0700
ogburnproperties.com

West End Portion of the Historic Resources Commission Agenda

Wednesday, October 6, 2004 at 4:00 P.M.
City Hall South Public Meeting Room, Room 530
100 East First Street, Winston-Salem

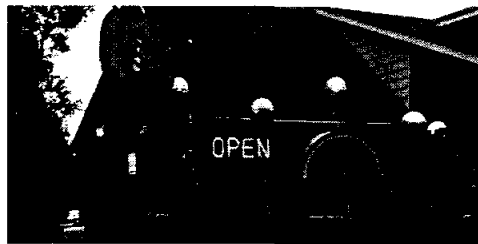
CERTIFICATE OF APPROPRIATENESS APPLICATIONS

Tony Hartsoe, Applicant
1068 West Fourth Street
Crawford-Sullivan House (Inventory #352)
Sign Installation
Case: #W020/04
(continued from September 1, 2004 meeting)

Slam Inc., (Sam McCormick), Applicants
868/870 West Fourth Street
Former Apartment Building (Inventory # 148)
Sign Installation
Case: #W022/04

MINOR WORK APPROVALS

Chris Wilson, Applicant
619 Summit Street
William G. Tennille House (Inventory #113)
Removal and Replacement of Shutters, Replacement of Existing Roof, and
Landscaping in Front and Rear Yards.
Case: #MW-W034/04



Happy 50th Anniversary!

The Lighthouse Restaurant celebrated its 50th Anniversary this past August. Good food, great service and smiling faces keep patrons coming back meal



Fine Wines & Dining in West End
878 W.4th St. 336-734-1797 Fax 734-1796
Winston-Salem NC E-mail: i_camel@bellsouth.net

SPAUGH MOTOR COMPANY

Jacque Spaugh *Sammy Spaugh *Robert Sasser
1160 West First St
Winston-Salem
NC 27101
Phone: 336-725-0486
Fax: 336-723-3751

*24 HR. WRECKER SERVICE
*BODY REPAIRS *PAINTING
*FRAME & UNIBODY REPAIRS
*WHEEL ALIGNMENT *TUNE-UP
*BRAKE SERVICE
*WHEEL STRAIGHTENING



431 West End Boulevard, W-S, NC
For Appointments call 631-1151
Kimberly Mitchell-Hackel

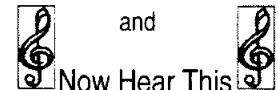
REALTOR® Multi-Million Dollar Producer



Carolinas Realty
370 Knollwood Suite 100 Winston-Salem, NC 27103
Res 336 727-0308 Bus 336 748-2023
Fax 336 727-9959 khackel@triad.rr.com



TAILS OF THE VILLAGE
117-B RENOLDA VILLAGE W-S 27106
T 336.777.1514 F 336.777.0454



and
Now Hear This
Hours 9-5 1138 Burke Street
www.encorebookstore.com



Salem Senior Services

William G. Benton CEO
915 West Fourth Street
Winston-Salem, NC 27101
Ph: 336.724.1000
benton@dsservices.com

"Serving All Your Real Estate Needs Since 1906"



Sam Ogburn, Sr. 722-1137
Property Management and Sales



Jewell Interiors

Specializing in Carpet, Vinyl Floors and Wallpaper

M-F 8:30-5 940 Burke St.
Sat 9:30 - 1:00 773-0411



MILLER-SHAW, INC. REALTORS

1066 W 4th Street
Winston-Salem, NC 27101
336-723-7731

Continued from Front Page

Many thanks to the homeowners opening their homes for this year's tour. Be sure to take the tour yourself! Also, a big thanks to all volunteers in advance for assisting with this event. This signature event is a unique opportunity for West Enders to come together as a community and let others experience the history and diversity that makes our neighborhood so special!

***Speaking of VOLUNTEERS!!! We still need people to assist with various areas such as: **Music Coordinator**, Ticket sales, Home Tour Guides, Van Drivers, Musicians, Parking Coordinators...and anything else that may come up. If you are interested in working a couple of hours the day of the tour please contact Alex Flowers or Toni Phillips.

Alex Flowers

Hm: 761-0108
Cell: 420-7619
Email: alex@wfvgroup.com

Toni Phillips

Hm: 724-6175
Cell: 624-6946



WHARTON
COMPUTER CONSULTING, INC.
SOFTWARE DEVELOPMENT ■ WEB DESIGN
www.whartoncomputer.com

Antiques

BY PATSY DYE
EUROPEAN ANTIQUES - RESTORATION SERVICE
SHAWLS & LAMPS

457 West End Blvd.
Winston-Salem, NC
Tel (336)723-6500 WWW.PATSYDYE.COM



ZEVELY HOUSE

"Fine Dining and Catering"
901 WEST FOURTH STREET
www.zevelyhouse.com

Margaret Merrell 725-6666



Mon-Fri
9am-5pm

1003 Brookstown Ave ph725-3202 fx761-8635

Elizabeth's
AT JONES PARK

Fine Consignments & Antiques

Debra and Steve Lawing, Proprietors
Tom Vincent, Associate

851 Reynolds Road W-S NC 27104 (336)723-2009

Hours: Monday-Saturday: 10-6 Sunday 1-4



490 West End Boulevard
747-0303

Welcome Neighbors!

If you know of new West Ender, please contact Marilyn Poorbaugh at 725-3303 so she can prepare a welcome basket to be picked up at the association's monthly meeting.

West End Neighborhood Association Membership Submission

Join the West End Association and help support a friendly and beautiful neighborhood.

Membership is \$15 per family or \$30 per business.

Send to: WEA, PO Box 21054; Winston-Salem, NC 27120-1054

Name: _____ Phone: _____

Address: _____

Email: _____ New Member () Renewal ()

Enclose \$15 for a family membership or \$30 for a business membership.

