

AREAS AROUND BOTH DROP INLETS TO BE REPAIRED BY RE-GRADING & SEEDING



4 SAW CUT THE EXISTING ASPHALT PAVEMENT, CREATING A SMOOTH & EVEN LINE. CONTRACTOR SHALL RE-PAVE WITH NEW ASPHALT WITH BASE, FROM THE SAW CUT EDGE TO THE PROPOSED NEW EDGE OF PAVEMENT & PROPOSED 6" MONOLITHIC CURB, TYPICAL. SEE PAVEMENT DETAIL, SHEET SP-5.

3 SILT, SOIL & BRICK DEBRIS TO BE REMOVED/CLEARED OFF BY CONTRACTOR & HAUL OFF SITE. SEE LANDSCAPE PLAN FOR ADDITIONAL REPAIRS & PLANTINGS FOR THIS AREA.

SILT, SOIL AND DEBRIS TO BE REMOVED & REPAIRED BY SEEDING/SOD.

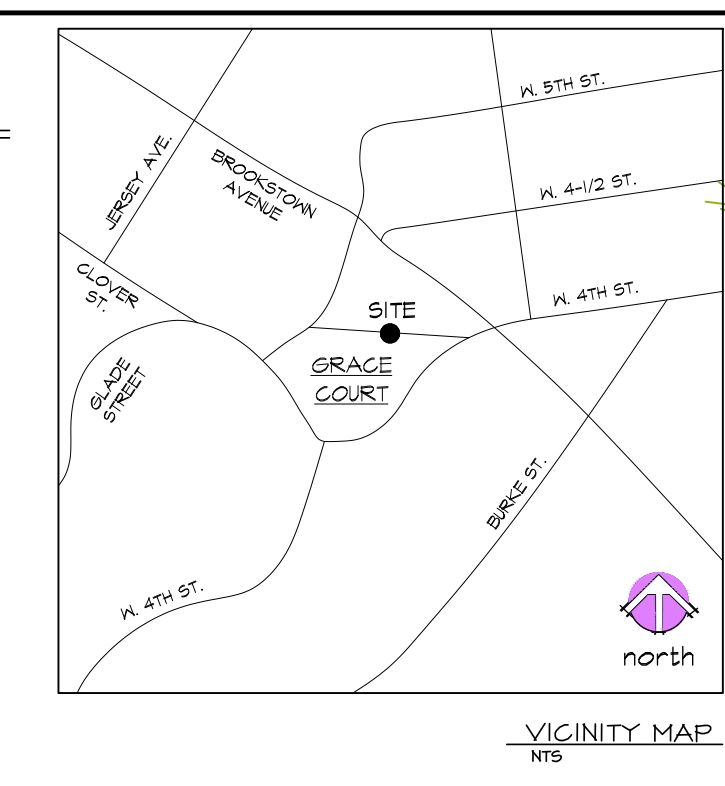


7 Tree Protection Fence, Typical



KEY NOTES:

- 1 LANDSCAPE CONTRACTOR SHALL REPAIR ERODED AREAS ADJACENT TO SIDEWALKS, STEPS OR FREESTANDING WALL. BACKFILL WITH A SUITABLE SOIL, THEN LANDSCAPE OR SOD THESE AREAS TO RE-ESTABLISH / STABILIZE AREAS FASTER.
- 2 REMOVE EXISTING SHRUBS IN THIS LOCATION, GRIND STUMP AND HAUL OFF SITE.
- 3 REMOVE SILT /SOIL FROM THIS AREA & HAUL OFF SITE & DISPOSE.
- 4 SAW CUT THE EXISTING ASPHALT PAVEMENT, CREATING A SMOOTH & EVEN LINE. CONTRACTOR SHALL RE-PAVE WITH NEW ASPHALT WITH BASE, FROM THE SAW CUT EDGE TO THE PROPOSED NEW EDGE OF PAVEMENT & PROPOSED 6" MONOLITHIC CURB, TYPICAL. SEE PAVEMENT DETAIL, SHEET SP-5.
- 5 LIMIT OF CONSTRUCTION LINE.
- 6 CLEAN UP THE FOOTING TOP/SURFACE. DISCARD BROKEN CONCRETE & BRICK DEBRIS.
- 7 TREE PROTECTION FENCE, TYPICAL. SEE DETAIL 409, SHEET SP-5.



JORDAN CONSULTANTS, ASLA, PA
 MASTER PLANNING - LANDSCAPE ARCHITECTURE
 SITE/CIVIL ENGINEERING
 P.O. BOX 16097 - WINSTON-SALEM, NC 27115
 TEL: 336.771.1456 - FAX: 336.771.4458 - jordanca@jordanca.com

Seal:
 NORTH CAROLINA
 LANDSCAPE ARCHITECT
 No. 8300
 C-391

Architect:
 Date: 6/16/17

AREAS ALONG THE EDGE OF THE EXISTING PAVEMENT AND/OR CONCRETE WALKWAY TO BE REPAIRED BY INSTALLING A MONOLITHIC CONCRETE CURB AND PLANT MATERIALS.



4 SAW CUT THE EXISTING ASPHALT PAVEMENT, CREATING A SMOOTH & EVEN LINE. CONTRACTOR SHALL RE-PAVE WITH NEW ASPHALT WITH BASE, FROM THE SAW CUT EDGE TO THE PROPOSED NEW EDGE OF PAVEMENT & PROPOSED 6" MONOLITHIC CURB, TYPICAL. SEE PAVEMENT DETAIL, SHEET SP-5.

2 BACKFILL OVER EXISTING CONCRETE FOOTING WITH SOIL SUITABLE FOR SOD, SEED OR PLANT INSTALLATION, TYPICAL.

2 APPROXIMATE LOCATION OF EXISTING "KNOCK OUT ROSES" TO BE REMOVED, TYPICAL.



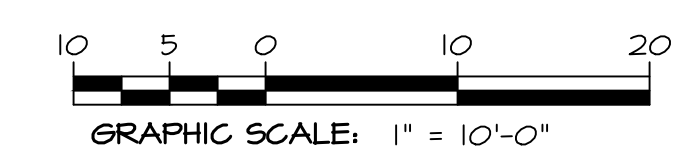
4 SAW CUT THE EXISTING ASPHALT PAVEMENT, CREATING A SMOOTH & EVEN LINE. CONTRACTOR SHALL RE-PAVE WITH NEW ASPHALT WITH BASE, FROM THE SAW CUT EDGE TO THE PROPOSED NEW EDGE OF PAVEMENT & PROPOSED 6" MONOLITHIC CURB, TYPICAL. SEE PAVEMENT DETAIL, SHEET SP-5.

6 CLEAN UP THE FOOTING TOP/SURFACE. DISCARD BROKEN CONCRETE & BRICK DEBRIS. TYPICAL.

VIEW OF CONFINED AREAS TO BE REPAIRED. (VIEW FROM INSIDE OF GRACE COURT PARK, TOWARDS WEST FOURTH STREET.)

LEGEND:

- EX. SIDEWALK
- EX. STORM WATER PIPE
- EX. GAS LINE
- EX. WATER LINE
- EX. SANITARY SEWER LINE
- EX. YARD / DROP INLET
- LIMIT OF CONSTRUCTION LINE
- EX. TREES TO REMAIN
- EX. MISC. SHRUBS
- EX. TREE LINE



Consulting Engineer:
 Site Surveyor:
 Owner:
 CITY OF WINSTON-SALEM RECREATION & PARKS DEPT.
 P.O. Box 2511
 WINSTON-SALEM, NC 27102
 Tel: 336-397-7908

Development Name:
 GRACE COURT PARK
 931 WEST 4TH STREET
 WINSTON-SALEM, NC

LANDSCAPE IMPROVEMENTS

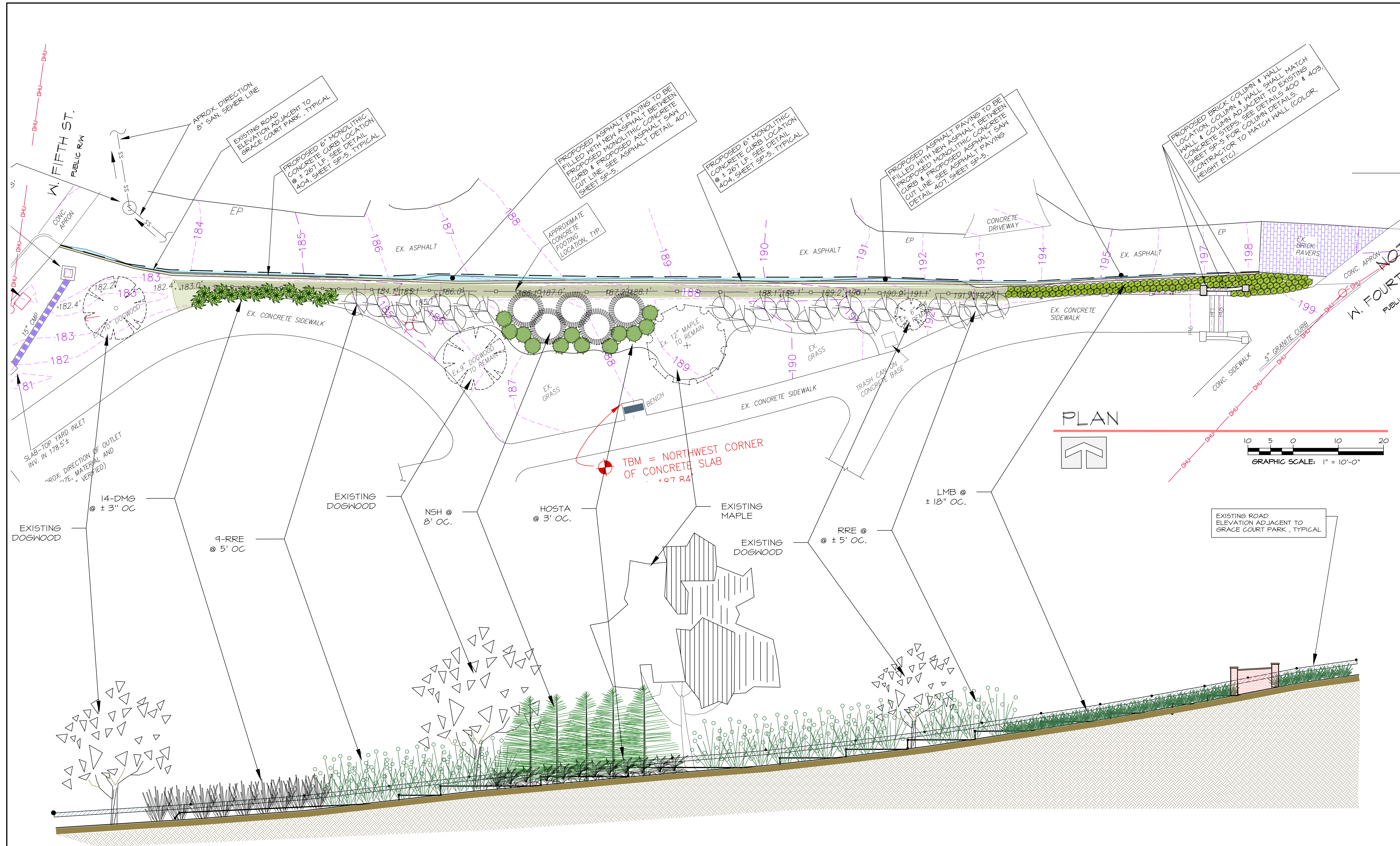
EXISTING CONDITIONS
 W/PHOTOGRAPHS OF REPAIR AREAS

Owner's Review Date: 6/16/2017
 Submittal Date: 6/16/2017
 Revisions

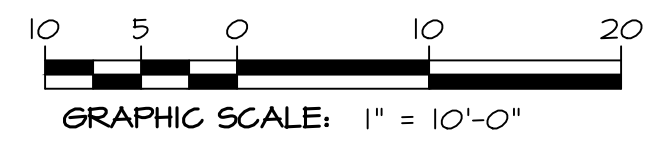
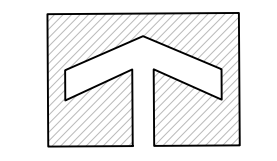
Sheet Number:
 A

Winston-Salem Recreation & Parks
 We PLAY
 We Provide Leisure All Year!

As instruments of service these drawings and the design represented are the property of Jordan Consultants, ASLA, PA. Reproduction or use of these drawings other than for the project intended, without written consent from the landscape architect is prohibited. Unauthorized use will be subject to legal action.



PLAN

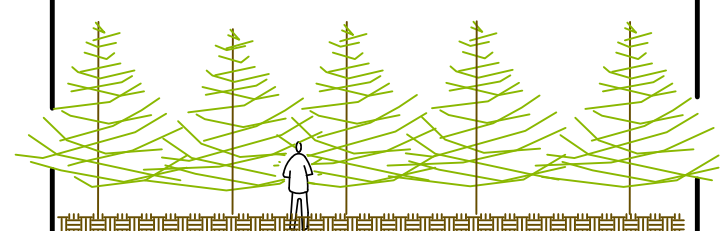
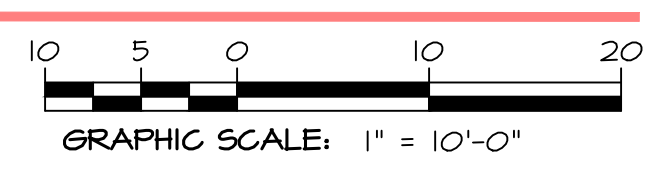


EXISTING ROAD ELEVATION ADJACENT TO GRACE COURT PARK, TYPICAL

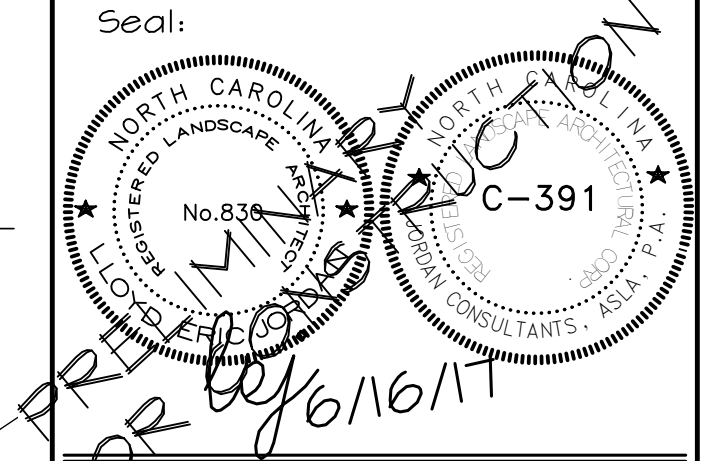
TBM = NORTHWEST CORNER OF CONCRETE SLAB @ 197.84'

NOTE:
SECTION TAKEN FROM INSIDE OF GRACE COURT PARK, LOOKING TOWARDS THE ADJACENT ASPHALT DRIVEWAY

PROFILE / SECTION



JORDAN CONSULTANTS, ASLA, PA
MASTER PLANNING • LANDSCAPE ARCHITECTURE
SITE/CIVIL ENGINEERING
P.O. BOX 16087 • WINSTON-SALEM, NC 27115
TEL: 336.771.1456 • FAX: 336.771.1458 • jordan@jordanconsultants.com



Seal:
Architect:

Consulting Engineer:

Site Surveyor:

Owner:



CITY OF WINSTON-SALEM
RECREATION & PARKS DEPT.
P.O. Box 2511
WINSTON-SALEM, NC 27102
Tel: 336-397-7908

Development Name:
GRACE COURT PARK
931 WEST 4TH STREET
Winston-Salem, NC

LANDSCAPE IMPROVEMENTS

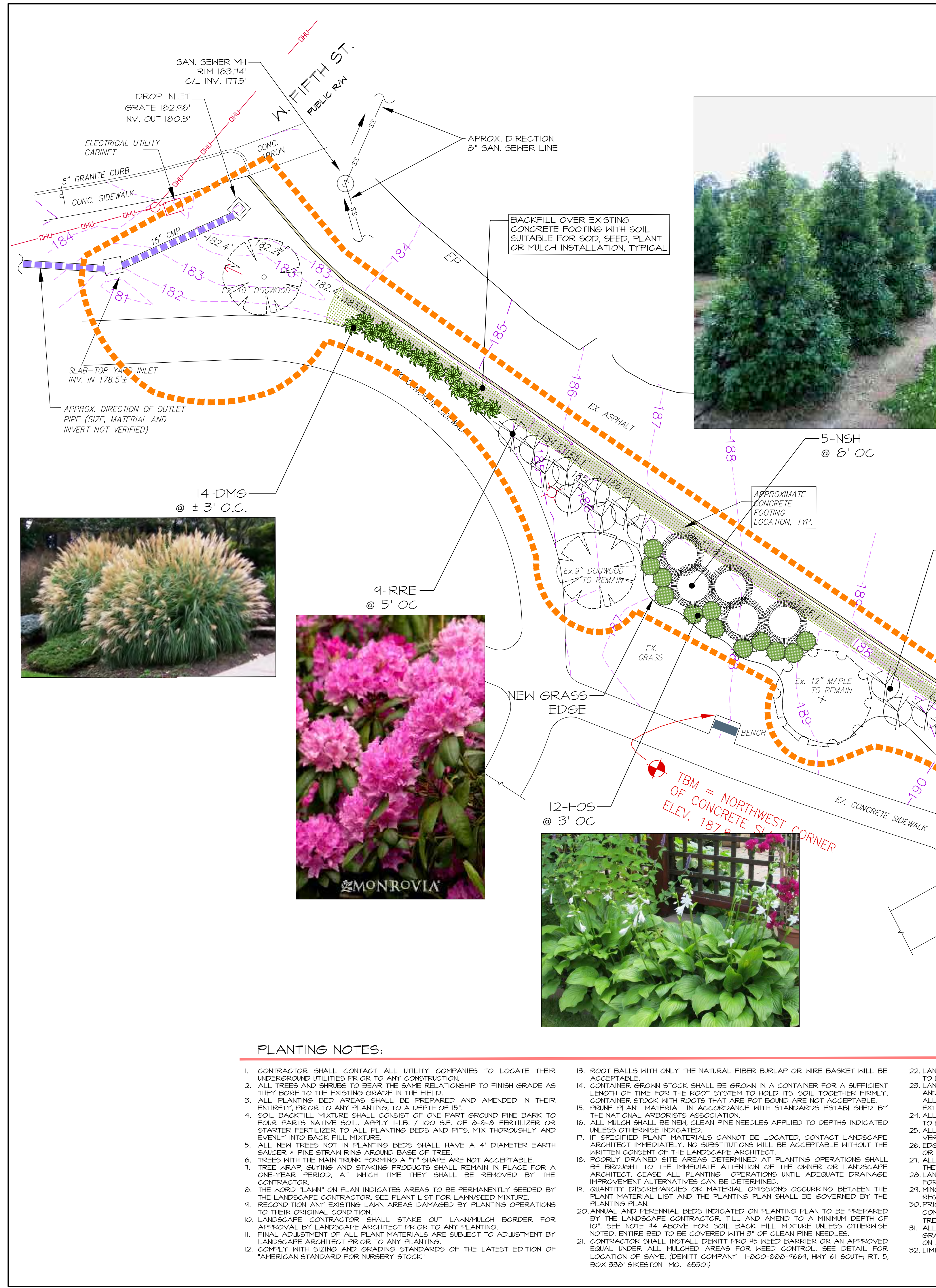
PLAN & PROFILE OF
EXISTING &
PROPOSED DESIGN

Owner's Review Date: 6/16/2017
Submittal Date: --/--/2017
Revisions

Sheet Number:

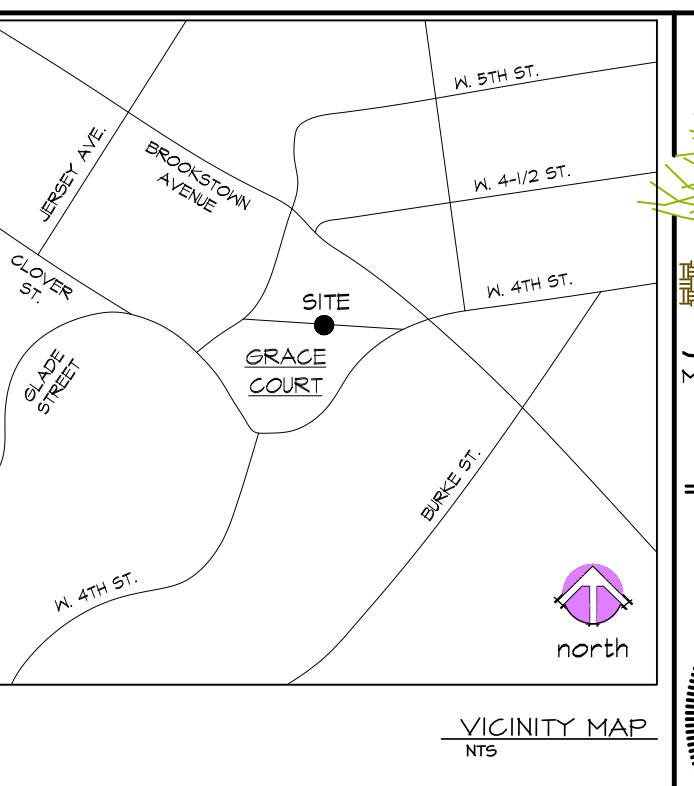
B

As instruments of service these drawings and the design represented are the property of Jordan Consultants, ASLA, PA. Reproduction or use of these drawings other than for the project intended, without written consent from the landscape architect is prohibited. Unauthorized use will be subject to legal action.



PLANT LIST: GRACE COURT PARK

KEY	BOTANICAL NAME	COMMON NAME	QTY.	HGT.	SFR.	CAL.	RT.	REMARKS
CANOPY TREES								
FLOWERING TREES								
EVERGREEN TREES								
LARGE EVERGREEN SHRUBS								
NSH	ILEX X NELLIE R. STEVENS'	NELLIE STEVENS HOLLY	5	6 - 7'			B&B OR CONT.	OPTION 'A' ONLY
EVERGREEN SHRUBS								
RRE	RHODODENDRON GATAMBIENSE 'ROSEUM ELEGANS'	ROSEY ELEGAN RHODODENDRON	22	2 - 3'			3 GAL	OPTION 'A' ONLY
DECIDUOUS SHRUBS								
ORNAMENTAL GRASSES								
DMG	MISCANTHUS SINEENSIS 'ADAGIO'	DWARF MAIDEN GRASS	14				3 GAL	OPTION 'A' ONLY
GROUND COVERS								
LMB	LIRIOPE MUSCARI 'BIG BLUE'	BIG BLUE LIRIOPE	112				1-GAL	OPTION 'A & B'
HOS	HOSTA PLANTAGINEA 'GRANDIFLORA'	PLAINTAIN LILY	12				1 GAL	OPTION 'A' ONLY
STANDARD LAWN / GRASS								
SOD	SOD MIXTURE: FINE -MEDIUM FESCUE; RICHMOND, ESCALADE & FALCON #3		---					EQUAL % OF EA.
SEED	SEED MIX: FINE-MEDIUM FESCUE; RICHMOND, ESCALADE & FALCON #3							EQUAL % OF EA.
OVER SEED	OVERSEED, FERTILIZE & AERATE WITH MIX ABOVE							
MISCELLANEOUS LANDSCAPE MATERIALS								
---	MULCH TO CONSIST OF LONG CLEAN PINE NEEDLES, 5 - 8" IN LENGTH OR AN EQUIVALENT, APPROVED EQUAL BY THE LANDSCAPE ARCHITECT							



JORDAN CONSULTANTS, ASLA, PA
 MASTER PLANNING - LANDSCAPE ARCHITECTURE
 SITE/CIVIL ENGINEERING
 P.O. BOX 16087 - WINSTON-SALEM, NC 27115
 TEL: 336.771.1456 - FAX: 336.771.1458 - jordan@jordanconsultants.com

Seal:
 NORTH CAROLINA LANDSCAPE ARCHITECTURE
 No. 8320
 C-391
 NOT FOR CONSTRUCTION

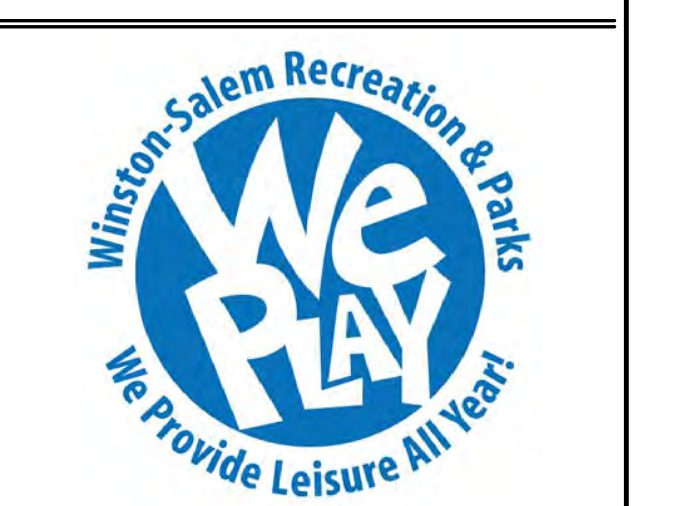
NOT FOR CONSTRUCTION 6/16/17

Architect:

Consulting Engineer:

Site Surveyor:

Owner:



Owner:
 CITY OF WINSTON-SALEM RECREATION & PARKS DEPT.
 P.O. Box 2511
 WINSTON-SALEM, NC 27102
 Tel: 336-397-7908

Development Name:
 GRACE COURT PARK
 931 WEST 4TH STREET
 Winston-Salem, NC

LANDSCAPE IMPROVEMENTS

PLANTING PLAN

Owner's Review Date: 6/16/2017
 Submittal Date: --/--/2017
 Revisions

Sheet Number:
 C

As instruments of service these drawings and the design represented are the property of Jordan Consultants, ASLA, PA. Reproduction or use of these drawings other than for the project intended, without written consent from the landscape architect is prohibited. Unauthorized use will be subject to legal action.

PLANTING NOTES:

- CONTRACTOR SHALL CONTACT ALL UTILITY COMPANIES TO LOCATE THEIR UNDERGROUND UTILITIES PRIOR TO ANY CONSTRUCTION.
- ALL TREES AND SHRUBS TO BEAR THE SAME RELATIONSHIP TO FINISH GRADE AS THEY BORE TO THE EXISTING GRADE IN THE FIELD.
- ALL PLANTING BED AREAS SHALL BE PREPARED AND AMENDED IN THEIR ENTIRETY, PRIOR TO ANY PLANTING, TO A DEPTH OF 15".
- SOIL BACKFILL MIXTURE SHALL CONSIST OF ONE PART GROUND PINE BARK TO FOUR PARTS NATIVE SOIL. APPLY 1-LB. / 100 S.F. OF 8-8-8 FERTILIZER OR STARTER FERTILIZER TO ALL PLANTING BEDS AND PITS. MIX THOROUGHLY AND EVENLY INTO BACK FILL MIXTURE.
- ALL NEW TREES NOT IN PLANTING BEDS SHALL HAVE A 4" DIAMETER EARTH SAUCER & PINE STRAIN RINGS AROUND BASE OF TREE.
- TREES WRAP, GUYING AND STAKING PRODUCTS SHALL REMAIN IN PLACE FOR A ONE-YEAR PERIOD, AT WHICH TIME THEY SHALL BE REMOVED BY THE CONTRACTOR.
- THE WORD "LAWN" ON PLAN INDICATES AREAS TO BE PERMANENTLY SEEDED BY THE LANDSCAPE CONTRACTOR. SEE PLANT LIST FOR LAWN/SEED MIXTURE.
- RECONDITION ANY EXISTING LAWN AREAS DAMAGED BY PLANTING OPERATIONS TO THEIR ORIGINAL CONDITION.
- LANDSCAPE CONTRACTOR SHALL STAKE OUT LAWN/MULCH BORDER FOR APPROVAL BY LANDSCAPE ARCHITECT PRIOR TO ANY PLANTING.
- FINAL ADJUSTMENT OF ALL PLANT MATERIALS ARE SUBJECT TO ADJUSTMENT BY LANDSCAPE ARCHITECT PRIOR TO ANY PLANTING.
- COMPLY WITH SIZING AND GRADING STANDARDS OF THE LATEST EDITION OF "AMERICAN STANDARD FOR NURSERY STOCK"
- ROOT BALLS WITH ONLY THE NATURAL FIBER BURLAP OR WIRE BASKET WILL BE ACCEPTABLE.
- CONTAINER GROWN STOCK SHALL BE GROWN IN A CONTAINER FOR A SUFFICIENT LENGTH OF TIME FOR THE ROOT SYSTEM TO HOLD ITS' SOIL TOGETHER FIRMLY. CONTAINER STOCK WITH ROOTS THAT ARE POT BOUND ARE NOT ACCEPTABLE.
- PRUNE PLANT MATERIAL IN ACCORDANCE WITH STANDARDS ESTABLISHED BY THE NATIONAL ARBORISTS ASSOCIATION.
- ALL MULCH SHALL BE NEW, CLEAN PINE NEEDLES APPLIED TO DEPTHS INDICATED UNLESS OTHERWISE INDICATED.
- IF SPECIFIED PLANT MATERIALS CANNOT BE LOCATED, CONTACT LANDSCAPE ARCHITECT IMMEDIATELY. NO SUBSTITUTIONS WILL BE ACCEPTABLE WITHOUT THE WRITTEN CONSENT OF THE LANDSCAPE ARCHITECT.
- POORLY DRAINED SITE AREAS DETERMINED AT PLANTING OPERATIONS SHALL BE BROUGHT TO THE IMMEDIATE ATTENTION OF THE OWNER OR LANDSCAPE ARCHITECT. CEASE ALL PLANTING OPERATIONS UNTIL ADEQUATE DRAINAGE IMPROVEMENT ALTERNATIVES CAN BE DETERMINED.
- QUANTITY DISCREPANCIES OR MATERIAL OMISSIONS OCCURRING BETWEEN THE PLANT MATERIAL LIST AND THE PLANTING PLAN SHALL BE GOVERNED BY THE PLANTING PLAN.
- ANNUAL AND PERENNIAL BEDS INDICATED ON PLANTING PLAN TO BE PREPARED BY THE LANDSCAPE CONTRACTOR. TILL AND AMEND TO A MINIMUM DEPTH OF 10". SEE NOTE #4 ABOVE FOR SOIL BACK FILL MIXTURE UNLESS OTHERWISE NOTED. ENTIRE BED TO BE COVERED WITH 3" OF CLEAN PINE NEEDLES.
- CONTRACTOR SHALL INSTALL DENITT PRO #5 WEED BARRIER OR AN APPROVED EQUAL UNDER ALL MULCHED AREAS FOR WEED CONTROL. SEE DETAIL FOR LOCATION OF SAME. (DENITT COMPANY 1-800-888-4664, HWY 61 SOUTH, RT. 5, BOX 339 SIKESTON MO. 65501)
- LANDSCAPE CONTRACTOR TO VISIT SITE AND ACCEPT THE CONDITIONS PRIOR TO BIDDING AND PLANT MATERIAL INSTALLATION.
- LANDSCAPE CONTRACTOR IS RESPONSIBLE FOR ALL FINE GRADING OF LAWN AND PLANTING AREAS DISTURBED DURING CONSTRUCTION. REMOVE FROM SITE ALL TEMPORARY SEEDING/STABILIZATION, STONES, GRAVEL AND ALL EXTRANEOUS DEBRIS INCLUDING ROOTS AND LIMBS.
- ALL PLANT BEDS TO BE TILLED AND AMENDED TO A DEPTH OF 15". ENTIRE BED TO BE COVERED WITH 3" OF PINE STRAIN IMMEDIATELY AFTER PLANTING.
- ALL GRASS UP TO PLANT BED BORDERS TO BE NEATLY EDGED WITH A VERTICAL EDGE, TYPICAL.
- EDGE OF TREE MULCH RING TO BE A MINIMUM OF 3" FROM ANY SHRUB BED EDGE OR PAVED SURFACE.
- ALL TREES OF THE SAME VARIETY TO MATCH IN SHAPE, FORM AND SIZE WHERE THEY ARE TO BE INSTALLED IN GROUPS, ROWS, OR AS STREET TREES.
- LANDSCAPE CONTRACTOR TO GUARANTEE ALL PLANT MATERIAL AND WORK FOR A PERIOD OF ONE YEAR FROM ACCEPTANCE OF WORK BY OWNER.
- MINOR SHIFTING AND ADJUSTMENTS OF PROPOSED TREE LOCATIONS MAY BE REQUIRED DUE TO EXACT LOCATION OF UNDERGROUND OR OVERHEAD UTILITIES.
- PRIOR TO SEEDING, LANDSCAPE CONTRACTOR IS TO CONTACT GENERAL CONTRACTOR FOR VERIFICATION THAT ALL LAND DISTURBING ACTIVITY (I.E. TRENCHING, GRADING, ETC.) HAS BEEN COMPLETED, IF REQUIRED.
- ALL DISTURBED AREAS THAT ARE NOT TO BE IN PLANT BEDS ARE TO BE FINE GRADED AND SEEDED, INCLUDING ANY DISTURBED AREAS WITHIN THE R.O.W. AND ON ADJACENT PROPERTY.
- LIMITS OF CONSTRUCTION LINE: [Dashed Orange Line]



PROPOSED 6" CURB/WHEEL STOP



PROPOSED ENTRY COLUMN & WALL TO MATCH EXISTING.

